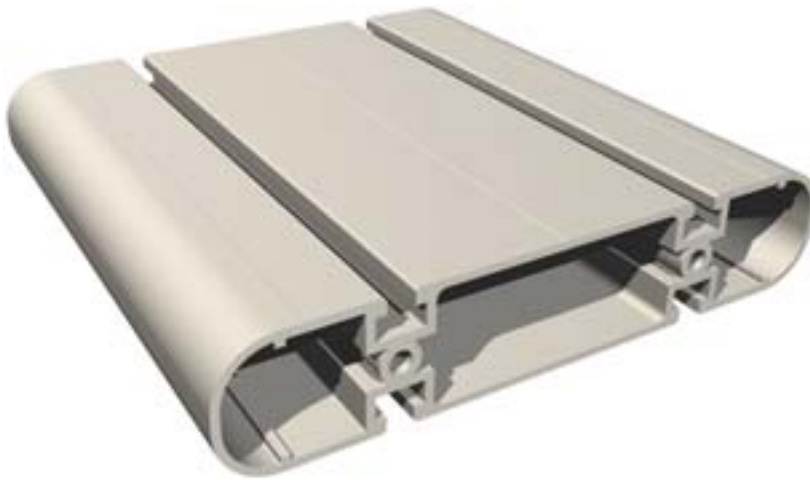


Multi-Equipment Carrier Profile

PG-Profiles



Features

- for the assembly of constant multi-equipment carriers
- aluminium, anodized or powder-coated (RAL-colours)
- made according to DIN 17615
- solid, nice design

Technical Data

	PG 200
dimensions (W x H)	200 x 40 mm
length	up to 3 m (special lengths upon request)
weight	4,600 g/m
	4 T-groove indentations for slide nuts M6
inertia moment I_x	597.59 cm ⁴
inertia moment I_y	38.64 cm ⁴
moment of resistance W_x	59.76 cm ³
moment of resistance W_y	19.32 cm ³

Ordering Data

profile designation	Art. No: L = 1000 Art. No: L = 3000
PG 200 natural anodized	208 050 1000 208 050 3000
PG 200 light grey	208 052 1000 208 052 3000
PG 200 anthracite	208 051 1000 208 051 3000

Dimension Drawings

