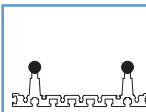
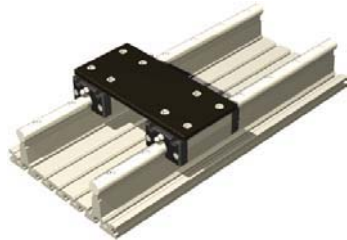


# ILF 7

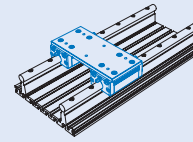
# Linear Guide Rail

## Features

- W 185 x H 61 mm
- 2 precision steel shafts Ø 16
- Stiff against torsion
- Aluminum shaft seat profile, nature anodized
- Attachment from below by thread rails M6 in the T-groove extrusion,
- Conditionally cantilevered
- Arbitrary Guide Rail length
- Weight: 10.27 kg/m

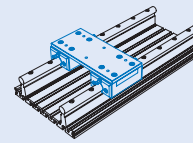


with 2 x or 4 x Aluminum Bearing Carriage IWS 1



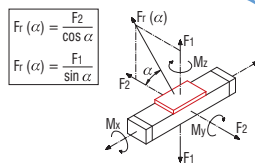
- L 84 x W 183 x H 8 mm
- Polished steel plate
- 2 x IWS 1, central lubrication possibility
- Play-free adjustable
- Total weight: 1.52 kg

with 2 x or 4 x Steel Bearing Carriage ILS 1



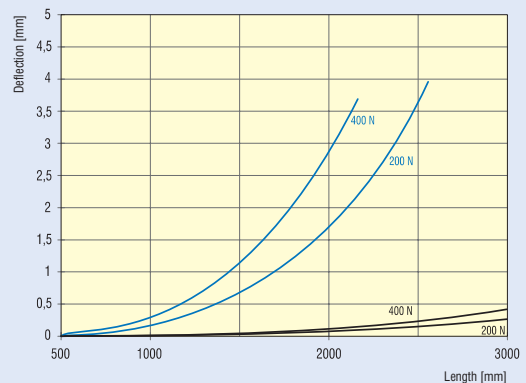
- L 84 x W 183 x H 8 mm
- Polished steel plate
- 2 x IWS 1, central lubrication possibility
- Play-free adjustable
- Total weight: 2.32 kg

## Load Data



Unit with 2x IWS 1	Unit with 2x ILS 1	Unit with 4x IWS 1	Unit with 4x ILS 1
C <sub>0</sub> 4929 N	C <sub>0</sub> 7598 N	C <sub>0</sub> 6572 N	C <sub>0</sub> 10130 N
C 2660 N	C 4857 N	C 3546 N	C 6476 N
F <sub>1</sub> stat. 4209 N	F <sub>1</sub> stat. 6488 N	F <sub>1</sub> stat. 5612 N	F <sub>1</sub> stat. 8650 N
F <sub>1</sub> dyn. 2271 N	F <sub>1</sub> dyn. 4148 N	F <sub>1</sub> dyn. 3028 N	F <sub>1</sub> dyn. 5530 N
F <sub>2</sub> stat. 4929 N	F <sub>2</sub> stat. 7598 N	F <sub>2</sub> stat. 6572 N	F <sub>2</sub> stat. 10130 N
F <sub>2</sub> dyn. 2660 N	F <sub>2</sub> dyn. 4857 N	F <sub>2</sub> dyn. 3546 N	F <sub>2</sub> dyn. 6476 N
M <sub>x</sub> stat. 263 Nm	M <sub>x</sub> stat. 405 Nm	M <sub>x</sub> stat. 351 Nm	M <sub>x</sub> stat. 541 Nm
M <sub>x</sub> dyn. 147 Nm	M <sub>x</sub> dyn. 195 Nm	M <sub>x</sub> dyn. 309 Nm	M <sub>x</sub> dyn. 476 Nm
M <sub>y</sub> stat. 173 Nm	M <sub>y</sub> stat. 228 Nm	M <sub>y</sub> stat. 361 Nm	M <sub>y</sub> stat. 557 Nm
M <sub>y</sub> dyn. 142 Nm	M <sub>y</sub> dyn. 259 Nm	M <sub>y</sub> dyn. 189 Nm	M <sub>y</sub> dyn. 346 Nm
M <sub>z</sub> stat. 79 Nm	M <sub>z</sub> stat. 124 Nm	M <sub>z</sub> stat. 167 Nm	M <sub>z</sub> stat. 304 Nm
M <sub>z</sub> dyn. 93 Nm	M <sub>z</sub> dyn. 146 Nm	M <sub>z</sub> dyn. 195 Nm	M <sub>z</sub> dyn. 356 Nm

## Deflection



## Dimensioned Drawings

