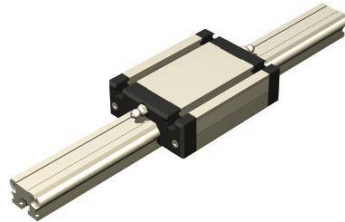


MLF 1

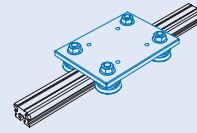
Linear Guide Rail

Features

- W 30 x H 20 mm
- 2 precision steel shafts Ø 8
- Stiff against torsion
- Aluminum shaft seat profile, nature anodized
- Attachment from the bottom by means of thread rails M6 in the T-groove
- Conditionally cantilevered
- Arbitrary Guide Rail length
- Weight: 1.61 kg/m
- **Option:** with through hole for M6
- **Option:** stainless version

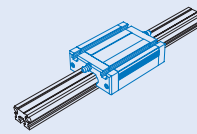


with Roller Carriage LW 6



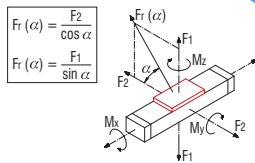
- L 125 x W 90 x H 7.7 mm
- Polished steel plate
- 4 rollers Ø 31, for-live lubrication
- Play-free adjustable
- Weight: 1.03 kg

with Aluminum Bearing Carriage WS 1



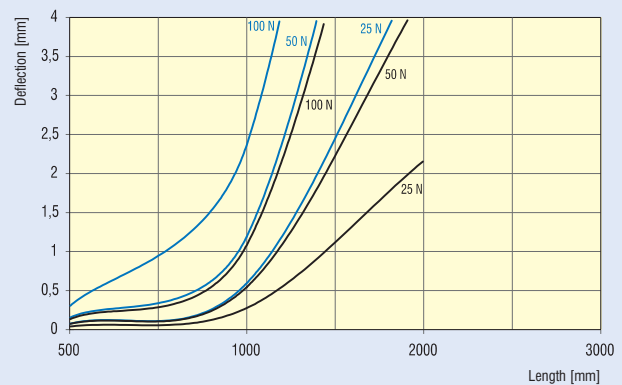
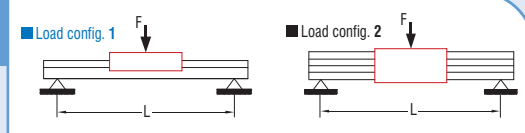
- L 96 x W 72 x H 28.5 mm
- Milled clamping surface
- M6 T-grooves
- Central lubrication
- Play-free adjustable
- Weight: 0.35 kg
- **Option:** stainless version

Load Data



Roller Carriage LW 6		Bearing Carriage WS 1	
C_0	2160 N	C_0	3114 N
C	4000 N	C	1846 N
F_1 stat.	4320 N	F_1 stat.	2659 N
F_1 dyn.	3792 N	F_1 dyn.	1576 N
F_2 stat.	2160 N	F_2 stat.	3114 N
F_2 dyn.	4000 N	F_2 dyn.	1846 N
M_x stat.	121.1 Nm	M_x stat.	37.3 Nm
M_x dyn.	194.4 Nm	M_x dyn.	100.5 Nm
M_y stat.	97.2 Nm	M_y stat.	117.6 Nm
M_y dyn.	106.3 Nm	M_y dyn.	22.1 Nm
M_z stat.	170.6 Nm	M_z dyn.	59.5 Nm
M_z dyn.	180.0 Nm	M_z dyn.	69.7 Nm

Deflection



Dimensioned Drawings

* = available upon request

