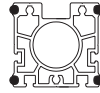
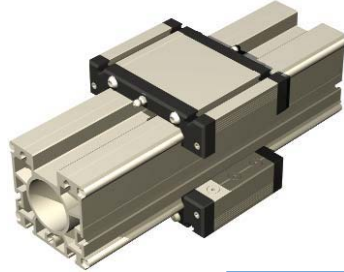


MLF 4

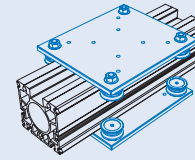
Linear Guide Rail

Features

- W 80 x H 80 mm
- 4 precision steel shafts Ø 8
- Stiff against torsion
- Aluminum shaft seat profile, nature anodized
- Attachment from the bottom by thread rails M6 in the T-grooves or at the fore-part by means of holes for M8
- Lateral T-grooves for limit switch attachment
- Conditionally cantilevered
- Arbitrary Guide Rail length
- Weight: 7.15 kg/m
- **Option:** stainless version

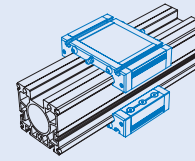


with 2 x Roller Carriage LW 7



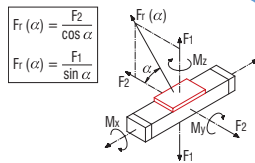
- L 175 x W 150 x H 7.7 mm
- Polished steel plate
- 4 rollers Ø 31, for-life lubrication
- Play-free adjustable
- Weight: 2.03 kg

with 2 x Bearing Carriage WS 3



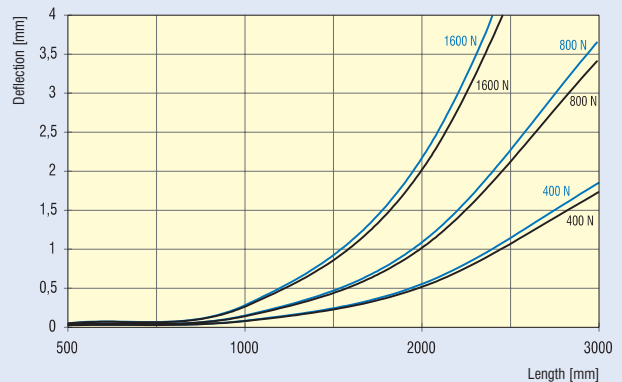
- L 96 x W 130 x H 32 mm
- Milled clamping surface
- M6 T-Grooves
- Central lubrication
- Play-free adjustable
- Weight: 0.50 kg
- **Option:** stainless version

Load Data



Roller Carriage LW 7		Bearing Carriage WS 3	
C_0	2160 N	C_0	3141 N
C	4000 N	C	1879 N
$F_{1, stat.}$	4320 N	$F_{1, stat.}$	2682 N
$F_{1, dyn.}$	3792 N	$F_{1, dyn.}$	1604 N
$F_{2, stat.}$	2160 N	$F_{2, stat.}$	3141 N
$F_{2, dyn.}$	4000 N	$F_{2, dyn.}$	1879 N
$M_{x, stat.}$	246.8 Nm	$M_{x, stat.}$	115.7 Nm
$M_{x, stat.}$	302.4 Nm	$M_{y, stat.}$	105.3 Nm
$M_{z, stat.}$	151.2 Nm	$M_{z, stat.}$	123.3 Nm
$M_{x, dyn.}$	216.7 Nm	$M_{x, dyn.}$	69.2 Nm
$M_{y, dyn.}$	265.4 Nm	$M_{y, dyn.}$	62.9 Nm
$M_{z, dyn.}$	280.0 Nm	$M_{z, dyn.}$	73.7 Nm

Deflection



Dimensioned Drawings

* = available upon request

